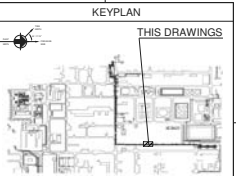


ASSEMBLY LIST FOR PAS-G04-609 WBS-G04 UNIT 11000

NO.	DESCRIPTION	QTY	AREA (M <sup>2</sup> )	WEIGHT(Kg)	REMARKS
G04PAS609FR101RP	WELDED FRAME	1	379.52	19941.66	
TOTAL			379.52	19941.66	

BOLT LIST FOR ASSEMBLY-G04PAS609FR101RP 1 PIECE

DIA	GRADE	TYPE	LENGTH	NOS.	MEMBER
-----	-------	------	--------	------	--------



NOTES

1. ALL DIMENSIONS ARE IN MILLIMETERS AND ALL ELEVATIONS AND CO-ORDINATES ARE IN METERS UNLESS NOTED OTHERWISE.

LEGENDS

[S.R.] 20 DIA ROD ABOVE T.O.S.  
 PAR : PRE-ASSEMBLED RACK  
 H200 : H200X200  
 CT125 : CT125X125  
 CT150 : CT150X150  
 CT175 : CT175X175  
 CT200 : CT200X200

READ THIS DRAWING IN CONJUNCTION WITH DRAWING NO. R1118111-11000-CS-SDR-14250-2001 TO 2003

HOLD LIST

DOCUMENT STATUS	REVISED	DATE
CS REVIEWED WITH COMMENTS		
REVISED WITH COMMENTS AS NOTED		
REVISED AND REQUIRING THE SUBMITTABLE FOR REVIEW - PROCEED WITH FABRICATION		
CS REJECTED DO NOT PROCEED WITH FABRICATION		
CS REVIEWED FOR INFORMATION ONLY		
SELF VENDOR SUPPLY AND CERTIFIED FINAL		
ISSUE OF CERTIFIED FINAL DOCUMENT DOES NOT RELIEVE SUPPLIER OF RESPONSIBILITY OF QUALITY UNDER THE CONTRACT/PURCHASE ORDER		

REV	DATE	REVISION	APPROVE
01		ISSUED FOR CONSTRUCTION	
02		ISSUED FOR CONSTRUCTION	

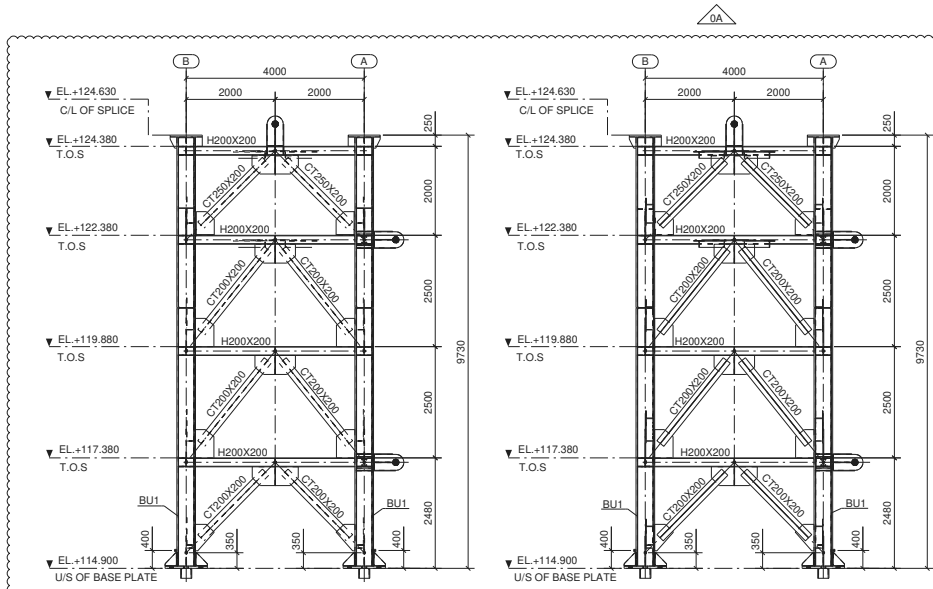
THIS DOCUMENT IS MADE AVAILABLE SUBJECT TO THE CONDITION THAT THE RECIPIENT WILL HOLD IT IN CONFIDENCE AND NOT DISCLOSE THE CONTENTS HEREOF AS ADVISED BY WRITING WITH THE DESIGN DEPARTMENT IN WRITING TO TRADE, PUBLIC COMPANY LIMITED. ANY UNAUTHORIZED REPRODUCTION OR DISSEMINATION OF ANY PART OF THIS DOCUMENT SHALL BE CONSIDERED AS INFRINGEMENT AND WILL BE PROSECUTED WITHOUT DELAY BY THE COMPANY IN CONJUNCTION WITH THE POLICE.

Thai Oil Public Company Limited  
 SPRACHA THAILAND

Petrofac  
 Joint Venture of Petrofac South East Asia Pte. Ltd., Suijoo Singapore Pte. Ltd. and Samsung Engineering (Thailand) Co., Ltd.  
 PAS-G04-609 WBS-G04 UNIT 11000

ERECTION DRAWING  
 EL-114.900 U/S OF BASE PLATE  
 EL-124.630 C/L OF SPLICE  
 CLEAN FUEL PROJECT, SPRACHA, THAILAND

SCALE	AS SHOWN	JOB NO.	DATE	REVISION
R1118111	R1118111-11000-CS-SDR-14250	0200	0A	



RECEIVED  
 19 DEC 2020  
 Sarcon (TH) Co., Ltd.

CONTROLLED  
 FOR CONSTRUCTION

